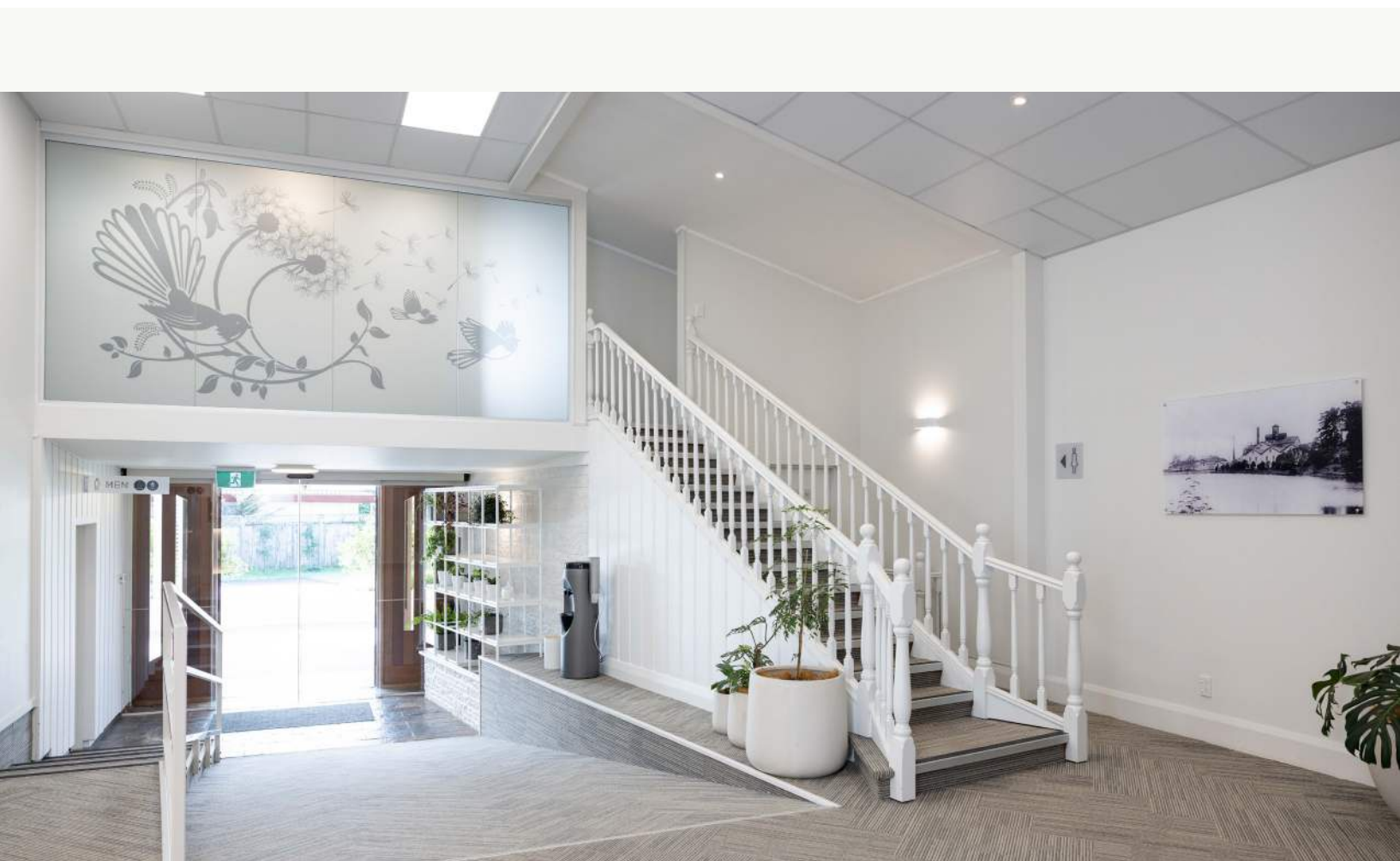


—H—  
**MORRIS**  
FUNERAL SERVICES

---

EST 1933

**Information Booklet**  
July 2025





# Contents

What To Do When Someone Dies	Page 2
Arranging a Funeral	Page 3
When, Where and What Kind of Farewell?	Page 4
Simple Cremation	Page 6
Gathering with a Private Cremation	Page 7
Gathering at Home with Private Cremation	Page 8
Cremation with Service for 50 People	Page 9
Weekday Burial with Service for 100 People	Page 10

## What To Do When Someone Dies

If you are unsure about anything, just give us a call on 09 489 5737, we are always available, 24/7.

### **At home:**

When you are ready, call your GP, and then call us, we will help you through the next steps.

### **At a rest home:**

The rest home staff will arrange for a Doctor to come and confirm the cause of death. Once the Doctor has been, or there is confirmation that they are on their way, call us. We will arrange to bring your loved one into our care and make a time to meet and discuss what happens next.

### **In hospital:**

Call us when you are ready. We will contact the hospital directly and arrange to bring your family member or friend into our care and make a time to meet and discuss what happens next.

We will look after everything that needs to be done on your behalf, just contact us.



## Arranging a Funeral

Often, people say they 'Don't want a fuss' or 'Put me in a cardboard box', but what about the people who are left behind? What do they need? What do they want? Grief is a difficult thing and a funeral, in whatever format it comes, is a huge part of the grieving process for family and friends. It is an event where people come together to remember, share stories, cry, laugh, and get human-to-human contact in their grief. In short, a funeral is important, both to commit your body and soul to the elements, and for the people you leave behind to say why you mattered and to remember you out loud.

Kia tau te Rangimarie, hoatu te maumahara.

Ka taka nga roimata . Hoatu nga manaakitanga

i a matou e whakatakoto ana i to tinana kia okioki, i te mea e arahina ana to wairua ki te ao.

May peace be bestowed, share memories, as the tears fall, give blessings.

As your body is returned to the earth and your spirit is guided to the afterlife.





## When, Where and What Kind of Farewell?

Every family has different needs. We will listen, discuss your choices and look after all the details, coordinating everything on your behalf.

A simple cremation with no service, a gathering, a large service, or something in between, you make the choices.

### **Some of the things you might like to think about are;**

- **Burial or Cremation?**  
If opting for a burial, is there an existing plot and who is the rights holder?
- **Body care choices:**  
It may be that basic body care (washing and closing of the eyes and mouth to create a peaceful expression) is all that is needed if anyone is to spend time with the deceased in the first day or two. While not a requirement, embalming does allow time to make decisions, spend time with the deceased over a longer period of time, or take the deceased home.
- Are there any special traditions or ceremonies important in your family's culture that should be included?
- Would you like us to put together a newspaper notice for you?
- Is there special music, a reading or poem you would like at the service?
- Would you like a photo tribute and what are your favourite photographs and memories that can be included?
- Would you like a celebrant to lead the service or do you have a family member or friend you could ask?
- Have any plans been made for organ or body donation?





**The following pages contain five example funeral scenarios that have been designed to give you an indication of cost.**

Funeral costs vary greatly for each family.

Please contact us with your wishes  
for a more accurate estimate based on your needs.





## Simple Cremation

### **Includes:**

- All necessary coordination throughout and available for you 24/7
- Initial transfer of your family member or friend into our care and out to the crematorium when it is time for cremation. (within 100km return)
- Meeting with you to make arrangements
- Simple cremation casket
- Cremation fee
- Medical Referee
- Completion of all cremation documentation, including death registration and obtaining and lodging necessary medical certificates
- One copy of the Death Certificate
- Cremation will take place as soon as the medical documentation is completed

### **Price variations:**

- Medical and cremation paperwork (average charge from the Doctor is \$250.00)
- Cremation fees can vary dependant on location
- Body care requirements
- Need of an oversized casket
- Any other adjustments outside of the inclusions above

**From \$5,605.00**

## Gathering with a Private Cremation

### **Includes:**

- All necessary coordination throughout and available for you 24/7
- Initial transfer of your family member or friend into our care, home to residence of choice and out to the crematorium when it is time for cremation (within 100km return)
- Meeting with you to make arrangements
- Basic body care
- Opportunity to spend time with your family member or friend
- Grosvenor casket
- Cremation fee
- Medical Referee
- Completion of all cremation documentation, including death registration and obtaining and lodging necessary medical certificates.
- One copy of the Death Certificate

### **Other considerations:**

- Medical and cremation paperwork (average charge from the Doctor is \$250.00)
- Cremation fees can vary dependent on location
- Body care requirements
- Need of an oversized casket
- Any other adjustments outside of the inclusions above

**From \$7,205.00**





## Gathering at Home with Private Cremation

### **Includes:**

- All necessary coordination throughout and available for you 24/7
- Initial transfer of your family member or friend into our care, home to residence of choice and out to the crematorium when it is time for cremation (within 100km return)
- Meeting with you to make arrangements
- Full body care
- Fencible natural pine casket
- Cremation fee
- Medical Referee
- Completion of all cremation documentation, including death registration and obtaining and lodging necessary medical certificates
- One copy of the Death Certificate

### **Other considerations:**

- Medical and cremation paperwork (average charge from the Doctor is \$250.00)
- Cremation fees can vary dependent on location
- Body care requirements
- Need of an oversized casket
- Any other adjustments outside of the inclusions above

**From \$9,070.00**



## Cremation with Service for 50 People

### **Includes:**

- All necessary coordination throughout and available for you 24/7
- Initial transfer of your family member, or friend, into our care.
- Meeting with you to make arrangements
- Full body care
- The opportunity to spend time with your family member or friend
- Newspaper notice • Grosvenor casket • Cremation fee • Medical Referee
- Completion of all official documentation, including death registration and obtaining and lodging necessary medical certificates
- One copy of the Death Certificate
- Service on a weekday for 50 people in Romaleigh Chapel
- Catering for 50 people in Romaleigh Lounge following the service
- Celebrant to lead the service
- A large casket spray of flowers and committal petals
- Service sheets for 50 people
- A photo tribute to music during the service
- Hearse

### **Other considerations:**

- Numbers are adjustable
- Cremation fees can vary slightly dependent on location
- Medical and cremation paperwork (average charge from the Doctor is \$250.00)
- Need of an oversized casket or alternative casket from our range
- Any other adjustments outside of the inclusions above

**From \$13,575.00**

## **Weekday Burial with Service for 100 People**

### **Includes:**

- All necessary coordination throughout and available for you 24/7
- Initial transfer of your family member, or friend, into our care.
- Meeting with you to make arrangements
- Full body care
- The opportunity to spend time with your family member or friend
- Newspaper notice • Grosvenor casket • Medical Referee
- Burial fee (double depth preparation)
- Completion of all burial documentation, including death registration and obtaining and lodging necessary medical certificates
- One copy of the Death Certificate
- Service on a weekday for 100 people at Romaleigh Chapel
- Catering for 100 people in the Romaleigh Lounge following the service
- Celebrant to lead the service
- A large casket spray of flowers and committal petals
- Service sheets for 100 people
- A photo tribute to music during the service
- Hearse

### **Other considerations:**

- Additional purchase of a burial plot at North Shore Memorial Park starts at \$5,200.00.
- Costs above are for a double depth plot; if the plot is being re-opened for a second burial, the digging cost is \$1,370.00.
- Need of an oversized casket or alternative casket from our range
- Any other adjustments outside of the inclusions above

**From \$15,378.00** (does not include plot purchase)



## **‘Part Of Your Community Since 1933’**

The H Morris team are local people supporting the  
North Shore community 24hrs – 7 days a week.

Feel free to call us anytime on:

Phone: (09) 489 5737

### **Contact Details**

[office@hmmorris.co.nz](mailto:office@hmmorris.co.nz)

Romaleigh

31 Ocean View Road

Northcote

Auckland 0627

**Funeral Directors**  
ASSOCIATION OF NZ

**MEMBER**

*Your assurance of a meaningful farewell*